
P.O. Box 18263 Phoenix, AZ 85005 | 602.841.0100 | repo@desertautorecovery.com

DESERT AUTO RECOVERY

SERVING ARIZONA SINCE 1996

Arizona's Premier Recovery Agency | Dedicated to providing the highest level of quality and professionalism in the recovery industry.

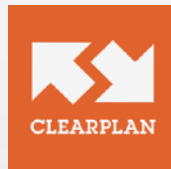
I.	Title Page
II.	Table of Contents
III.	About Desert Auto Recovery
IV.	Fleet Photos
V.	Lot Photos
VI.	Storage Photos
VII.	Office Photos
VIII.	Company Pledge
IX.	Insurance Bond Information
X.	Recovery Database Network
XI.	License Plate Recognition
XII.	Workflow Management
XIII.	Compliance Monitoring
XIV.	Coverage Area
XV.	Coverage Area Zip Codes
XVI.	Certificate of Good Standing
XVII.	Allied Bond
XVIII.	Service Price List
XIX.	References
XX.	Contact Information

Desert Auto Recovery, INC is a repossession company dedicated to providing collateral recovery services with the highest level of quality and professionalism. We have over **50 years** of the best combined experience in the collateral recovery industry, serving the Phoenix Metropolitan Area. Our recovery agents are well versed in every aspect of the repossession process and are proficient in all **State** and **FDCPA** repossession laws. We use only **state of the art wheel-lift trucks** to ensure damage-free towing. All of our trucks are equipped with **Teletrac Fleet Director** and **real time active GPS systems** which allows us to maximize efficiency. We also use the latest **LPR** (License Plate Recognition) **DRN** cameras, as well as, **RDN, CLEARPLAN** and **VTS**.



DRN

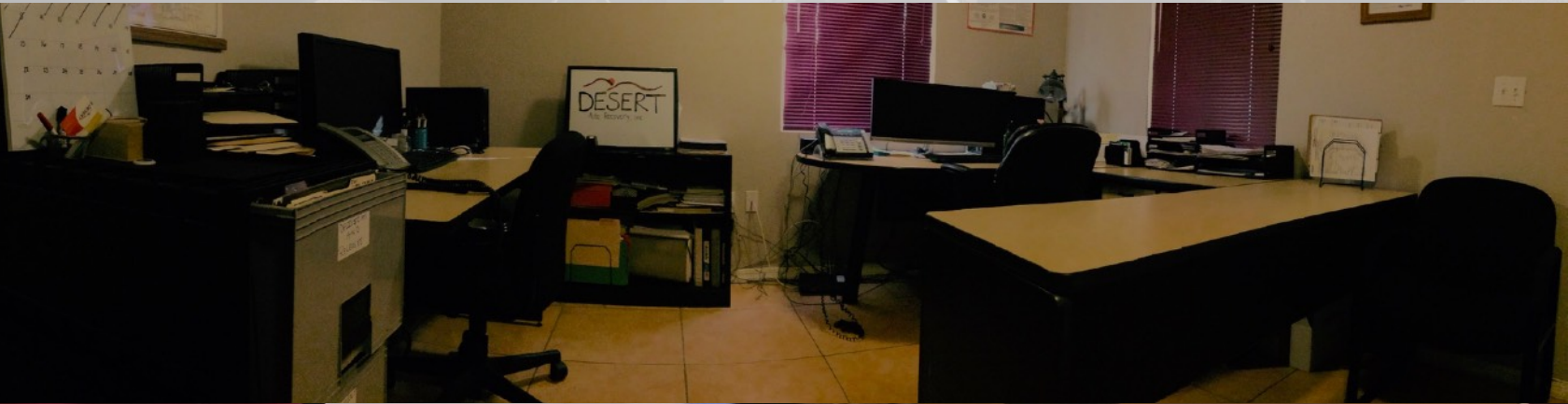
Digital
Recognition
Network











Company Pledge

We strive to be a new type of repossession company, combining our many years of experience with the latest technology in the recovery industry. We feel confident you will be pleased with the aggressive yet professional nature of our work. We are committed to educating our staff on the latest repossession laws and recovery techniques. We receive ongoing training from **VTS** and the best association in the industry, **Allied Finance Adjusters**. We provide our professional services at a competitive price and we work closely with our clients to ensure our services exceed their expectations.

Our agents are among the best in the industry. They are dedicated and professional.

Our office staff works hard to keep everything in order. They are organized and easy to work with.

Our daily updates are prompt, detailed and accurate so you can feel confident your accounts are being worked thoroughly. For maximum results, we take every detail into consideration, including place of employment, references and debtor history.

- ☑ **General Liability**
- ☑ **Automobile Liability**
- ☑ **Workers' Compensation**
- ☑ **Wrongful Repossession**
- ☑ **Client Protection Bond**
- ☑ **Dishonesty Bond**
- ☑ **On Hook**
- ☑ **Garage Keepers**

We are fully bonded and insured. Although we take every precaution to avoid any mishaps during the recovery process, we understand that accidents can happen. For this reason, we have the best insurance in the industry; a **\$3,000,000** insurance policy plus a **\$1,000,000** bond through **Allied Finance Adjusters**. Maintaining our ensured status gives our lenders the peace of mind of being protected in case of an accident.



✓ OPTIMIZED LENDER | AGENT COMMUNICATION

- Automated updates
- Real time end to end repossession management
- Encrypted data transfer to ensure privacy and security
- Customizable Reports and Forms
- Current Status Dashboard
- License Plate Recognition(LPR)
- Skip Tracing
- Key Code Purchasing
- License Plate Purchase
- Over 150 national lenders use RDN to assign cases
- Over 2000 Active Service Providers



DRN | Digital
Recognition
Network

LPR TECHNOLOGY

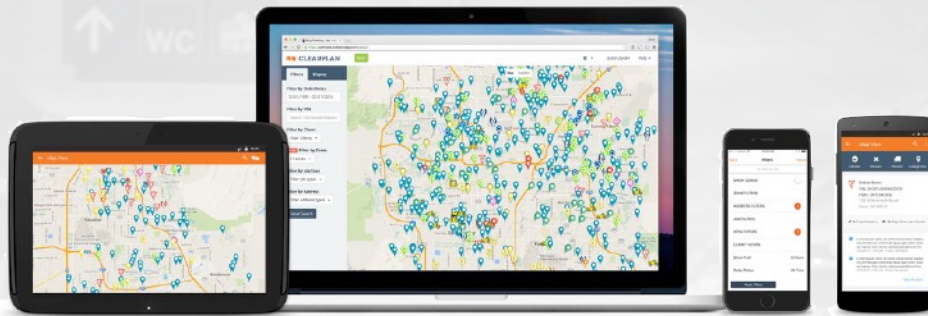
- Superior Optical Character Recognition (OCR)
- License plate image capture at up to 120 MPH
- Camera aiming tools for easy set-up
- Low power consumption at <8W average
- Built-in DSP means less equipment in the vehicle
- Easy troubleshooting with diagnostic tools
- Infrared and color images
- Reduce operating costs

REAPER 4 CAMERA KIT





CLEARPLAN



EFFICIENT WORKFLOW

- Jobs & Mapping
- Zones
- 24 Hour Realtime Reporting
- Connected Updates & Notes
- System & Custom Icons
- iOS and Android App
- DRN Advanced Alert Feed
- RDN Integration
- iRepo Integration
- RMP Integration
- MRS Integration
- Detailed Zone Data
- Realtime Agent Location
- Geo-Stamp Checkins
- Multi-Select Account Change
- Client + Account Breakdown
- Increased Storage Capacity
- DRN Historical Hit Integration



**ENDOR TRANSPARENCY
SOLUTIONS**



RIGOROUS VETTING

- Verification of Criminal Background
- Screening of all individual employees, principals or owners, business entities
- Verification of proper licensing
- Verification of insurance and bond coverage's
- Validation and tracking of all industry certifications
- Tracking of employee continued education certifications and training
- Tracking of Consumer Complaints
- Company bankruptcies and lawsuits
- On-Site office/lot inspections together with an 80 point compliance inspection
- Corporate Financial Statements
- State Certificate of Good Standing
- State Formation Certificates
- Tracking of Minority Certifications
- Maintaining service provider's Policies and Procedure, Employee Handbook, Compliant Handling and Disaster Recovery manuals

PHOENIX METROPOLITAN AREA

- Anthem
- Apache Junction
- Avondale
- Bagdad
- Black Canyon City
- Buckeye
- Carefree
- Casa Grande
- Cave Creek
- Chandler
- Fountain Hills
- Gilbert
- Glendale
- Globe
- Gold Canyon
- Golden Canyon
- Goodyear
- Heber
- Higley
- Laveen
- Litchfield Park
- Luke Air Force Base
- Maricopa
- Mesa
- Paradise Valley
- Payson
- Peoria
- Phoenix
- Queen Creek
- San Tan Mobile Village
- San Tan Valley
- Scottsdale
- Sun City
- Sun City West
- Sun Lakes
- Surprise
- Tempe
- Thatcher
- Tolleson
- Wickenburg
- Wittmann

COVERAGE AREA ZIP CODES

85320 Aguila	85310 Glendale	85011 Phoenix	85071 Phoenix	85378 Sun City
85086 Anthem	85311 Glendale	85012 Phoenix	85072 Phoenix	85379 Sun City
85290 Apache Junction	85312 Glendale	85013 Phoenix	85073 Phoenix	85387 Sun City
85190 Apache Junction	85318 Glendale	85014 Phoenix	85074 Phoenix	85388 Sun City
85290 Apache Junction	85309 Glendale Luke AFB	85015 Phoenix	85075 Phoenix	85375 Sun City West
85099 Arizona State Lottery	85338 Goodyear	85016 Phoenix	85076 Phoenix	85376 Sun City West
85287 Arizona State University	85395 Goodyear	85017 Phoenix	85078 Phoenix	85387 Sun City West
85322 Arlington	85283 Guadalupe	85018 Phoenix	85079 Phoenix	85248 Sun Lakes
85287 ASU	85236 Higley	85019 Phoenix	85080 Phoenix	85374 Surprise
85323 Avondale	85339 Laveen	85020 Phoenix	85082 Phoenix	85378 Surprise
85392 Avondale	85340 Litchfield	85021 Phoenix	85083 Phoenix	85379 Surprise
85392 Avondale Goodyear	85340 Litchfield Park	85022 Phoenix	85085 Phoenix	85387 Surprise
85395 Avondale Goodyear	85307 Luke AFB	85023 Phoenix	85086 Phoenix	85388 Surprise
85323 Avondale-Goodyear	85309 Luke AFB	85024 Phoenix	85087 Phoenix	85374 Surprise Dysart Retail
85338 Avondale-Goodyear	85201 Mesa	85025 Phoenix	85097 Phoenix	85280 Tempe
85326 Buckeye	85202 Mesa	85026 Phoenix	85098 Phoenix	85281 Tempe
85396 Buckeye	85203 Mesa	85027 Phoenix	85099 Phoenix	85282 Tempe
85377 Carefree	85204 Mesa	85028 Phoenix	85127 Queen Creek	85283 Tempe
85329 Cashion	85205 Mesa	85029 Phoenix	85142 Queen Creek	85284 Tempe
85327 Cave Creek	85206 Mesa	85030 Phoenix	85227 Queen Creek	85285 Tempe
85331 Cave Creek	85207 Mesa	85031 Phoenix	85242 Queen Creek	85287 Tempe
85097 Census Bureau	85208 Mesa	85032 Phoenix	85263 Rio Verde	85353 Tolleson
85224 Chandler	85209 Mesa	85033 Phoenix	85250 Scottsdale	85354 Tonopah
85225 Chandler	85210 Mesa	85034 Phoenix	85251 Scottsdale	85190 Tortilla Flat
85226 Chandler	85211 Mesa	85035 Phoenix	85252 Scottsdale	85290 Tortilla Flat
85244 Chandler	85212 Mesa	85036 Phoenix	85253 Scottsdale	85355 Waddell
85246 Chandler	85213 Mesa	85037 Phoenix	85254 Scottsdale	85358 Wickenburg
85248 Chandler	85214 Mesa	85038 Phoenix	85255 Scottsdale	85390 Wickenburg
85249 Chandler	85215 Mesa	85039 Phoenix	85256 Scottsdale	85361 Wittmann
85286 Chandler	85216 Mesa	85040 Phoenix	85257 Scottsdale	85363 Youngtown
85127 Chandler Heights	85274 Mesa	85041 Phoenix	85258 Scottsdale	
85227 Chandler Heights	85275 Mesa	85042 Phoenix	85259 Scottsdale	
85242 Chandler Heights	85277 Mesa	85043 Phoenix	85260 Scottsdale	
85342 Circle City	85342 Morristown	85044 Phoenix	85261 Scottsdale	
85098 CTC	85087 New River	85045 Phoenix	85262 Scottsdale	
85086 Desert Hills	85343 Palo Verde	85046 Phoenix	85263 Scottsdale	
85335 El Mirage	85253 Paradise Valley	85048 Phoenix	85264 Scottsdale	
85264 Fort McDowell	85345 Peoria	85050 Phoenix	85266 Scottsdale	
85268 Fountain Hills	85380 Peoria	85051 Phoenix	85267 Scottsdale	
85269 Fountain Hills	85381 Peoria	85053 Phoenix	85268 Scottsdale	
85268 Fountain Hills	85382 Peoria	85054 Phoenix	85269 Scottsdale	
85269 Fountain Hills	85383 Peoria	85055 Phoenix	85271 Scottsdale	
85309 Luke AFB	85385 Peoria	85060 Phoenix	85351 Sun City	
85337 Gila Bend	85001 Phoenix	85061 Phoenix	85372 Sun City	
85301 Glendale	85002 Phoenix	85062 Phoenix	85373 Sun City	
85302 Glendale	85003 Phoenix	85063 Phoenix	85374 Sun City	
85303 Glendale	85004 Phoenix	85064 Phoenix	85375 Sun City	
85304 Glendale	85005 Phoenix	85065 Phoenix	85376 Sun City	
85305 Glendale	85006 Phoenix	85066 Phoenix		
85306 Glendale	85007 Phoenix	85067 Phoenix		
85307 Glendale	85008 Phoenix	85068 Phoenix		
85308 Glendale	85009 Phoenix	85069 Phoenix		
85309 Glendale	85010 Phoenix	85070 Phoenix		

STATE OF ARIZONA



Office of the
CORPORATION COMMISSION

CERTIFICATE OF GOOD STANDING

To all to whom these presents shall come, greeting:

I, Jodi A. Jerich, Executive Director of the Arizona Corporation Commission, do hereby certify that

*****DESERT AUTO RECOVERY, INC.*****

a domestic corporation organized under the laws of the State of Arizona, did incorporate on June 19 2006.

I further certify that according to the records of the Arizona Corporation Commission, as of the date set forth hereunder, the said corporation is not administratively dissolved for failure to comply with the provisions of the Arizona Business Corporation Act; and that its most recent Annual Report, subject to the provisions of A.R.S. sections 10-122, 10-123, 10-125 & 10-1622, has been delivered to the Arizona Corporation Commission for filing; and that the said corporation has not filed Articles of Dissolution as of the date of this certificate.

This certificate relates only to the legal existence of the above named entity as of the date issued. This certificate is not to be construed as an endorsement, recommendation, or notice of approval of the entity's condition or business activities and practices.

IN WITNESS WHEREOF, I have hereunto set my hand and affixed the official seal of the Arizona Corporation Commission. Done at Phoenix, the Capital, this 24th day of May, 2016, A. D.



Jodi A. Jerich
Jodi A. Jerich, Executive Director

By: 1438356

\$1,000,000



**ALLIED FINANCE ADJUSTERS CONFERENCE, INC.
\$1,000,000 CLIENT PROTECTION BOND**

**Desert Auto Recovery
Phoenix, Arizona**

By these Presents, effective as of 12:01 a.m. on the first day of January 2016 to the thirty-first day of December 2016, that Allied finance Adjusters Conference, Inc. ("Allied") hereby issues this self-insuring bond up to the amount of \$1,000,000 during the above period to indemnify Lenders, Allied Members, their agents, servants and employees, Allied, its Officers and Directors, its agents, servants and employees, pursuant to the terms and conditions set forth below.

1) Who is covered:

Those persons who are entitled to be indemnified under the terms of this Bond are collectively referred to as the "Indemnitees" and they are grouped into three categories,

- (1) Lenders engaging the above identified Allied Member,
- (2) Allied Itself
- (3) The individual Officers, Directors and Members of Allied

Definitions:

- a) Lender: A Lender must search the member through the Allied website to verify the member is in good standing with the Association, and which has the authority to assign accounts that are either delinquent or in default.
- b) Allied: Allied Finance Adjusters Conference, Inc.
- c) Officers and Directors: The officers and Directors of Allied either collectively or individually.

2) Method of Assignment of Accounts for Repossession:

Lenders, which are indemnified under the terms set forth herein, shall assign all of their rights, title and interest in any loan underlying the subject of the underlying repossession, as a condition of indemnification, by either

- (1) electronic transmission over the Allied Web site.
- (2) on an approved Allied form with the proper hold harmless clause as contained in the current Allied Directory of Approved Members.

The following actions which cause a loss to a qualified Lender are covered:

- a) Loss of money security or property up to the amount of this Bond which results directly from any fraudulent or dishonest act committed by any Allied member.
- 1) Fraudulent or dishonest acts are defined to mean any acts committed by an Allied member or an employee of said member with the express intent to cause the Lender to sustain such loss and to obtain financial benefit for the Allied member or his/her employees other than salary, bonus commission, or other benefits or emoluments earned in the normal course of employment, whether acting alone or in collusion with others.
- 2) Bonding conditions, limits, and conditions:
 - a) A loss is covered only if reported within 30 days of discovery or 30 days from occurrence. However, in no event will a loss be covered if reported more than 90 days after occurrence.
 - b) No legal action shall be filed for a period of 120 days from the date of reporting the loss unless a formal rejection of the claim is sent in writing to the claimant prior to the expiration of the 120-day period.

www.AlliedFinanceAdjusters.com

Repossession Fee	\$350.00
Voluntary Surrender	\$150.00
Close Fee	\$50.00
Storage Fee (10 days free)	\$10.00 / day
Impound Repo Fee	\$250.00
Key Transponder	\$115.00
Key Fee Cut by Locksmith	\$55.00

WELLS FARGO

100 W Washington St.
Phoenix, AZ 85003

SOUTHWEST AUTO FINANCE

PO Box 68050
Anaheim, CA 92817

CREDIT UNION WEST

PO Box 7600
Glendale, AZ 85312

Additional information available upon request.



DESERT

Auto Recovery, Inc

Office Hours

Monday - Friday
9 am - 5 pm

Office

602.841.0100

Fax

602.246.6407

Lot Address

1019 S 30th Ave.
Phoenix, AZ 85009

After-Hours Contact Info

Joann: 602.446.7019

Jeff : 602.469.1290

Website

www.desertautorecovery.com

Email

repo@desertautorecovery.com